

OWNERS MANUAL



7" Table Top Tile Saw
MODEL:CTC701



FORM <<CTC701 rev 2/2010

WARRANTY

Norton warrants all products manufactured by it against defects in workmanship or materials for a period of one (1) year from the date of shipment to the customer.

The responsibility of Norton under this warranty is limited to replacement or repair of defective parts at Norton's Stephenville, Texas factory, or at a point designated by it, of such part as shall appear to us upon inspection at such point, to have been defective in material or workmanship, with expense for transportation borne by the customer.

In no event shall Norton be liable for consequential or incidental damages arising out of the failure of any product to operate properly.

Integral units such as **gasoline engines, electric motors, batteries, tires, transmissions, etc.**, are excluded from this warranty and are subject to the prime manufacturer's warranty.

This warranty is in lieu of all other warranties, expressed or implied, and all such other warranties are hereby disclaimed.

Important: Before placing equipment in operation, record the following information.

MODEL: _____ **SERIAL NO.** _____

PURCHASE FROM: _____

ADDRESS: _____

CITY _____ **STATE** _____ **ZIP** _____

TELEPHONE NO. _____

Before using this equipment, make sure that person using it read and understand the instructions in this owner's manual.

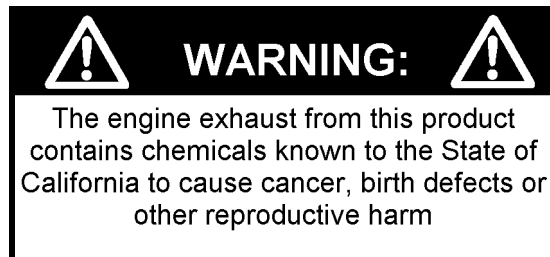


Table Of Contents

CONTENTS	PAGE
I. CTC701 Safety Instructions	4-9
1. Basic Safety Instructions	4
1.1 Symbols	4
1.2 Safety Precautions	5
1.3 Dust and Silica Warning	6
1.4 Safety instructions for working with the machine	7-9
2. Machine Description	10-12
2.2 Use of Machine	10
2.3 Layout	10-11
2.3 Technical Specifications	12
2.4 Items Includes With The CTC701	12
3. Assembly	12-14
3.1 Tool Assembly	13
3.2 Blade Installation	13
3.3 Guide-A-Cut Assembly	13
3.4 Electrical Connections	13
3.5 Starting The Machine	13-14
3.6 Water Cooling System	
4. Transport And Storing	14
4.1 Securing For Transport	14
4.2 Long Period Of Inactivity	14
5. Operating the CTC701	14-15
5.1. Positioning The CTC701	14
5.1.2 Space Required For Operation And Maintenance	14
5.2 Cutting Methods	14-15
5.3 General Advice For Cutting	15
6 Maintenance And Servicing	15-16
6.1 Maintenance Of The Machine	15
6.2 Lubrication	15
6.3 Cleaning The CTC701	16
7. Trouble Shooting	16
7.1 Trouble Shooting Procedures	16
7.2 Trouble-Shooting Guide	16
8. Parts List Section	17-19
8.1 CTC701 Service Parts	18-19



Read Owners Manual Before Use



Safety Alert Symbol: Information Following This Symbol Is Very Important.

Use Only Norton Diamond Blades

I. CTC701 Safety Instructions

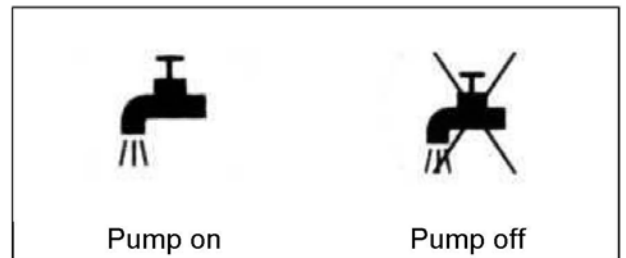
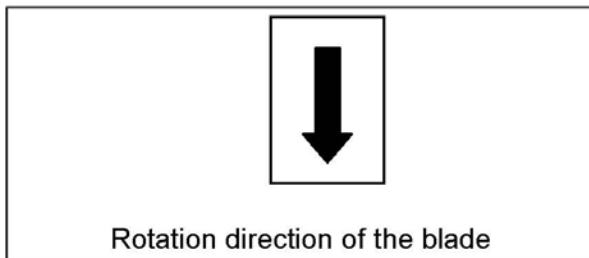
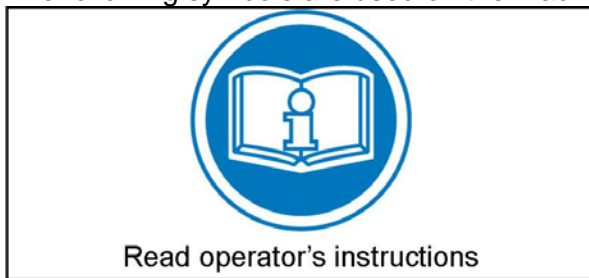
1. Basic Safety Instructions

The CTC701 is exclusively designed for the cutting of ceramic tiles, porcelain tiles, natural stone flooring materials, artificial stone flooring materials, and terracotta materials up to 2-1/4" (57mm). Uses other than the manufacturer's instructions will violate the machine's warranty. The Saint-Gobain Abrasives, Inc. shall not be held responsible for any resulting damage. Any risk shall be borne entirely by the user. Observing the operating instructions and compliance with inspection and servicing requirements shall also be considered as included under use in accordance with the regulations.

1.1 Symbols

Important warnings and pieces of advice are indicated on the machine using symbols.

The following symbols are used on the machine:



You Are Responsible For Your Safety!!!

1.2 Safety Precautions

Important! The following safety precautions must always be observed.

Additional Warning/Hazard Symbols



Keep all guards in place when operating any piece of equipment



Keep hands, feet, hair, and clothing away from all rotating parts



Never tamper with the governor components of settings to increase the maximum speed. Severe personal injury and damage to the engine or equipment can result if operated at speed above maximum. Always obey the maximum speed rating of the blade.



DO NOT LIFT THE SAW BY THE CUTTING TABLE

WARNING

1.3 Dust and Silica Warning

Grinding/cutting/drilling of masonry, concrete, metal and other materials can generate dust, mists and fumes containing chemicals known to cause serious or fatal injury or illness, such as respiratory disease, cancer, birth defects or other reproductive harm. If you are unfamiliar with the risks associated with the particular process and/or material being cut or the composition of the tool being used, review the material safety data sheet and/or consult your employer, the material manufacturer/supplier, governmental agencies such as OSHA and NIOSH and other sources on hazardous materials and make certain to comply with all product warnings and instructions for the safe and effective use of the material being cut. California and some other authorities, for instance, have published lists of substances known to cause cancer, reproductive toxicity, or other harmful effects.

Control dust, mist and fumes at the source where possible. In this regard use good work practices and follow the recommendations of the manufacturer/supplier, OSHA/NIOSH, and occupational and trade associations. Water should be used for dust suppression when wet cutting is feasible. When the hazards from inhalation of dust, mists and fumes cannot be eliminated through engineering controls such as vacuum and/or water mist, the operator and any bystanders should always wear a respirator approved by NIOSH/MSHA for the material being cut.

Use Approved:



Eye Protection



Hearing Protection



Respiratory Protection



Head Protection

1.4 Safety instructions for working with the machine

Before Commencing Work:

- Know your CTC701 Tile Cutting machine! Read the Operator's manual carefully. Learn the operation, application and limitations, as well as the specific potential hazards peculiar to this equipment and its usage.
- Before commencing work, make yourself familiar with the working environment at the place of use. The working environment includes: obstacles in the area of work and maneuver, the firmness of the floor, necessary protection at the site relating to public thoroughfares and the availability of help in the event of accidents.
- Keep the work area clean avoiding cluttered work areas.
- Consider the work area environment!
 - Do not expose power tools to rain.
 - Wear rubber boots to further insulate yourself from the machine.
 - Mop up all excessive water around the work area before and after cutting.
 - Keep the work area well lit.
- Keep visitors away. Do not let visitors contact tool or extension cord. All visitors should be kept at a safe distance from the work area.
- Do not force the material into the blade.
- Place the machine on an even, firm and stable base!
- Check for correct mounting of the blade regularly.
- Immediately remove damaged or badly worn blades, as any damaged or badly worn blade is a danger to the operator.
- The material to be cut must be held securely in place on the table to allow no unexpected movement during cutting operation.
- Always cut with the blade guard in position.
- Only use Norton diamond blades with continuous rim with the machine! The use of other tools can damage the machine and will void the warranty!
- Read the blades' specifications carefully to choose the correct tool for your application.
- Dress properly for the work being performed.
 - Do not wear loose clothing or jewelry which can get caught in moving or rotating parts.
 - Rubber gloves and non-skid footwear is recommended when working outside.
 - Wear protective covering to contain long hair.
- Don't overreach! Keep proper footing and balance at all times. The slippery surface created during the drilling operation results in unstable footing.
- Use safety goggles or safety glasses that meet ANSI Z87.1-2003 safety standards.

Electrical Safety Precautions:

- Always turn off the machine and disconnect it from the main source of electricity before any work on the machine is done.
- Make sure that all electrical connections are secure and properly insulated to eliminate contact of live wires with spray water or dampness.
- When the machine is used with water, it is **IMPERATIVE** that you properly ground. Let a qualified electrician check in case of doubt.

- Use only three-wire grounded extension cords suitable for use outdoors and of sufficient gage to accommodate power requirements.
- Ground the machine! The tile saw must be grounded while in use to protect the operator from electric shock. The motor is equipped with a three prong grounding type plug to fit the proper type receptacle. The green [or green & yellow] conductor in the cord is grounding wire.
- NEVER connect the ground green [or green & yellow] wire to a live terminal.
- Replace frayed or damaged power and extension cords.
- Don't abuse the cord. Never carry the tool by the cord or yank the cord to disconnect the plug from the receptacle.
- ALWAYS disconnect the power before servicing or changing accessories or Diamond Blades
- ALWAYS make sure power switch is in "off" position before connecting the machine to power.
- ALWAYS check, to make sure wrenches are removed from the motor spindle before connecting power or starting the tile saw.
- In case of emergency, you can stop the machine by pushing on the front cover of the switch.
- In the event of the machine breaking down or stopping for no apparent reason, switch off the main electricity supply, even in case of power supply failure. Only a qualified electrician is allowed to investigate the trouble and remedy the fault.

1. Before mounting any blade on the saw, the blade should be inspected for any damage which might have occurred during shipment, handling or previous use.
2. The blade collars and arbors should be cleaned and examined for damage before mounting the blade.
3. The blade must be properly fitted over the arbor with the relief side of the collars facing the blade.
4. The blade shaft nut must be tightened securely against the outside blade shaft collar.
5. The blade must be operated within the specified maximum operating speed listed on the blade.
6. Fill the water pan with water.
7. The blade guard must be in place with the nose guard down and locked when the saw is running.
8. The operator should wear safety glasses and any other appropriate safety equipment.
9. When starting the saw, the operator should stand away and to the side of the blade.
10. If for any reason the saw should stall in the cut, remove the material from the blade. Check the outside blade shaft collar and nut for tightness. Inspect the blade for damage before restarting the saw. Use caution when resuming a cut. Be certain that the blade is in alignment with the previous cut.
11. Do not force the blade into the cut by pushing the material into the blade too fast.



You Are Responsible For Your Safety!!!

2. Machine Description

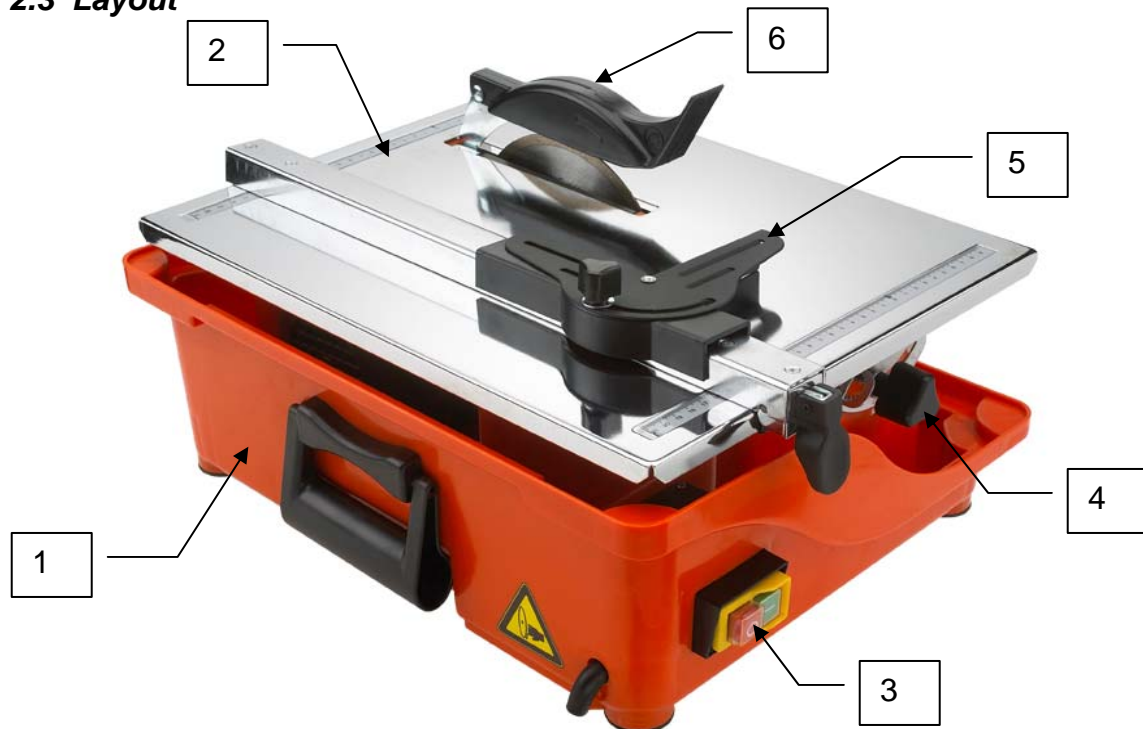
Any modification, which could lead to a change in the original characteristics of the machine, may be done only by Saint-Gobain Abrasives who shall confirm that the machine is still in conformity with the safety regulations.

The CTC701 Tile saw is designed for durability and high performance for onsite wet and dry cutting operations of a wide range of tiles. As with all other Norton Clipper products, the operator will immediately appreciate the attention given to detail and quality of materials used in construction. The machine and its component parts are assembled to high standards assuring long life and minimum maintenance.

2.2 Use of Machine

The machine is designed for wet and dry cutting of a large range of tiles. It is not designed for cutting wood or metals.

2.3 Layout



Frame (1)

The frame is made of a strong plastic to ensure perfect rigidity. It supports the motor, the cutting table and the switch.

Cutting Table (2)

Zink coated steel top for an excellent resistance to corrosion with engraved measurements for precise guide-a-cut alignment (5).

Electrical Motor and Switch (3)

Motor with 1.07 HP (800W). The motor is designed to operate on 115-120 volts, 60 Hz, single phase electrical circuits. Use a circuit with a 15 Amp circuit breaker for best performance. The ON-OFF switch also serves as emergency stop.

Tilting Table (4)

The cutting table tilts to 45 ° for making miter cuts. To tilt the cutting table loosen the two screws on the side and pivoting the table. The CTC701 has a built in gauge for precise angle adjustments.

Guide-a-cut (5)

The guide-a-cut can be adjusted to the desired cutting width. It is locked using two screws. The guide-a-cut is also adjustable for miter cuts.

Blade Guard (6)

The pivoting blade guard is designed to accept a 7" (177mm) diameter blade and offers maximum operator protection and increased visibility of the work piece. The guard is attached to the frame.

2.3 Technical Specifications

Technical Specifications

	CTC701
Product Number (UPC)	70184630029
Blade Guard Capacity - in (mm)	7" (177)
Maximum Depth of Cut - in (mm)	2-1/4" (57)
Arbor Size - in (mm)	5/8"
Blade Flange Diameter - in (mm)	3 (78)
Blade Shaft RPM	2,990
Maximum Material Size - in (mm) ¹	-NA-
Rip Cut Size - in (mm) ¹	-NA-
Diagonal Size - in (mm) ¹	-NA-
Cut Depth - in (mm)	1-9/16" (40)
Cutting Table	Steel
Built In 45° Miter Cut	YES
Cutting Table	Zinc Plated Steel
Water Pump	Blade Rotates In Water Pan
Power Source	Electric
Motor/Engine Type	T.E.F.C.
Maximum Horsepower	1.07 HP
Voltage	115 volt
Cycle*/Current/Phase	60 Hz/AC/1
Full Load Amps	7 Amps

Saw Dimensions

Saw Length - in (mm)	18.11" (460mm)
Saw Width - in (mm)	14.17" (360mm)
Saw Height - in (mm)	11-7/16" (290)
Weight Crated - lbs (kg)	40 lbs (18 kg)
Weight – uncrated - lbs (kg)	35 lbs (15.9 kg)
Weight Of Machine With Water Pan Full	41 lbs (19 kg)
Sound pressure ²	72 dB (A) (ISO EN 11201)
Sound power ²	80 dB (A) (ISO EN 3744)

* = Data Provided by Motor/Engine Manufacturer, ¹ = Open Table Top Design Allows Unlimited Material Sizes, ² The sound measures have been made following pr EN 12638, Annex A;

2.4 Items Includes With The CTC701

- ✓ Carrying Case
- ✓ Guide-A-Cut
- ✓ Small Phillips Head Screw Driver
- ✓ Blade Shaft Wrenches: 19mm Wrench and Spanner Wrench
- ✓ Norton Continuous Rim Diamond Blade for Cutting Tile

3. Assembly

The machine is delivered fully equipped. It is ready for operation after assembling the diamond blade, the blade guard and the guide-a-cut, and connection to the appropriate power supply.

3.1 Tool Assembly

Only use NORTON CLIPPER continuous rim blades with a maximum diameter of 7" (177mm) can be used with the CTC701. All tools used must be selected with regard to their maximum permitted cutting speed for the machine's maximum permitted rotation speed. Before mounting a new blade into the machine, switch off the machine and isolate it from the main source of electricity.

3.2 Installing The Blade

- Loosen the two screws on the side of the plate blade cover with the Phillips head screw driver and remove the plate blade cover.
- Loosen the hexagonal nut which holds the removable outer flange on the blade shaft with the 19mm wrench and use the spanner wrench to lock the flange.
- Remove the outer flange.
- Loosen the two screws holding the blade guard support and remove it from the machine.
- Clean the flanges and blade shaft and inspect for wear.
- Mount the blade on the flange ensuring that the direction of rotation is correct (check with the arrow on the blade guard for blade shaft rotational direction and match the blade rotational direction to the machine). Installing the blade incorrectly can cause poor cutting performance and reduce the life of the blade.
- Replace outer blade flange.
- Tighten hexagonal nut.
- Retighten the two screws holding the front cover, and reassemble the blade guard support on the table. The blade bore must correspond exactly to the diameter of the blade shaft. Cracked or damaged bore is dangerous for the operator and for the machine.

Plate Blade Cover



3.3 Guide-A-Cut Assembly

To assemble the guide a cut:

- Put the guide a cut on the table.
- Use the handle on the side of the guide-a-cut to pinch it on the table

3.4 Electrical Connections

Check that,

- The voltage/phase supply corresponds to the information indicated on the motor plate.
- Available power supply must have ground connection in conformity with safety regulations.

3.5 Starting The Machine

Press the green button to start the machine. Press on the red button to stop the machine. The red button is also the emergency switch.

3.6 Water Cooling System

- Fill the water pan with clean water up to 3/16" (5mm) from the upper edge of the water tray.
- Ensure that water is delivered adequately to both sides of the blade, as insufficient water supply may result in premature failure of the diamond blade and is not covered by any warranty.
- Always make sure that there is enough water in the pan and refill if necessary.
- In case of frost, empty the water cooling system from its water.

4. Transport And Storing

4.1 Securing For Transport

Before transporting the machine, always remove the blade and empty the water pan.

4.2 Long Period Of Inactivity

If the machine is not going to be used for a long period, please take the following measures:

- Completely clean the machine
- Empty the water pan. The storage site must be clean, dry and at a constant temperature.

5. Operating the CTC701

5.1. Positioning The CTC701

- Remove anything from the area, which might hinder the working procedure!
- Make sure the site is sufficiently well lit!
- Observe all proper conditions for connecting to power supplies!
- Place electric cables in so that the cable will not damage by the device and that the cable will not contact water!
- Make sure you have a continual adequate view of the working area so you can intervene in the working process at any time!
- Keep other staff out of the area, so you can work securely.

5.1.2 Space Required For Operation And Maintenance

Leave 6-1/2 feet (2 m) around the machine for usage and maintenance of the CTC701.

5.2 Cutting Methods

To use the machine correctly, you must face it with the two hands on the tile to be cut, pushing the tile against the blade. Always keep your hands away from the moving blade. To set the guide-a-cut at the desired cutting width, release it, and use the two scales on

the table to align the guide. Then tighten it back.

5.3 General Advice For Cutting

- Only tiles with max. dimensions of 15-3/4"x15-3/4"x1/4" (400x400x6mm) and max. weight of 6-1/2 lbs (3kg) can be cut with the machine.
- Before beginning work make sure tools are firmly seated!
- Select the right Norton Diamond Blade as recommended by Norton Clipper which depends on the material to be cut, and if cutting wet or dry.
- Make sure the water tray contains enough water.
- Set the guide-a-cut to the desired width of cut, using the two engraved measurements to align it correctly.
- Do not force on the motor. This machine is not designed for a continuous use.

6. Maintenance And Servicing

To ensure a long-term quality from the cutting with the CTC701, please follow the maintenance plan below:

		Begin of the day	During the changing of tool	End of the day or more often if required	Every week	After a fault	After a damage
Whole machine	Visual control (general aspect, watertightness)						
	Clean						
Flange and blade fixing devices	Clean						
Motor cooling fans	Clean						
Water pan	Clean						
Engine housing	Clean						
Reachable nuts and screws	Tighten up						

6.1 Maintenance Of The Machine

Always perform the maintenance of the machine with the machine isolated from the electrical supply.

6.2 Lubrication

The CTC701 uses life-lubricated bearings. Therefore, you don't need to lubricate the machine at all.

6.3 Cleaning of the machine

Your machine will last longer if you clean it thoroughly after each day of work, especially water pan, motor and blade flange. To clean disconnect the machine from the power source and wipe down the CTC701 with a damp cloth.

7. Trouble Shooting

7.1 Trouble Shooting Procedures

Should any fault occur during the use of the machine, turn it off, and isolate it from the electrical supply. Any works dealing with the electrical system or supply of the machine can only be carried out by a qualified electrician.

7.2 Trouble-Shooting Guide

Trouble	Possible Source	Resolution
Motor Is Not Running	No Electricity	Check The Electrical Supply (Circuit Breaker For Example)
	Extension Cable Is Too Small Of Gauge Or Too Long	Change Extension Cable Do Not Exceed A 50' 10AWG
	Defective Extension Cable	Change Extension Cable
	Defective Switch	CAUTION : Can Only Be Solved By Qualified Electrician
	Defective Motor	Change Motor Or Contact Motor Manufacturer
No Water On The Blade	Not Enough Water In The Pan	Refill The Water Pan
Cuts Are Not Straight	Guide-A-Cut Is Not Properly Adjusted	Check And Realign The Guide-A-Cut
Blade Is Not Cutting The Material	Incorrect Blade Specification For Material Being Cut	Replace Blade With The Correct Norton Diamond Blade Specification.
Material Is Chipping	Too Fast Of Cut Speed Incorrect Blade Specification	Slow Feed Speed Of Tile Replace Blade With One Of The Correct Specification

8. Parts List Section

Ordering Information

1. List model number and serial number of machine.
2. List part number and serial number of part not the item number.
3. Wherever alternate parts are shown due to product improvement, inspect the part you have and provide additional description as necessary.
4. Specify mode of shipping desired, such as, parcel post, truck, U.P.S., best way, etc.

Clear instructions will avoid problems and faulty deliveries. If not sure, please send us the defective part. In the case of a warranty claim, the part may be needed to be returned for evaluation.

Warranty can be claimed and technical support obtained from your local distributor where machines, spare parts and Norton Diamond Blades can be purchased as well:

For the nearest Clipper distributor call 1-800-554-8003

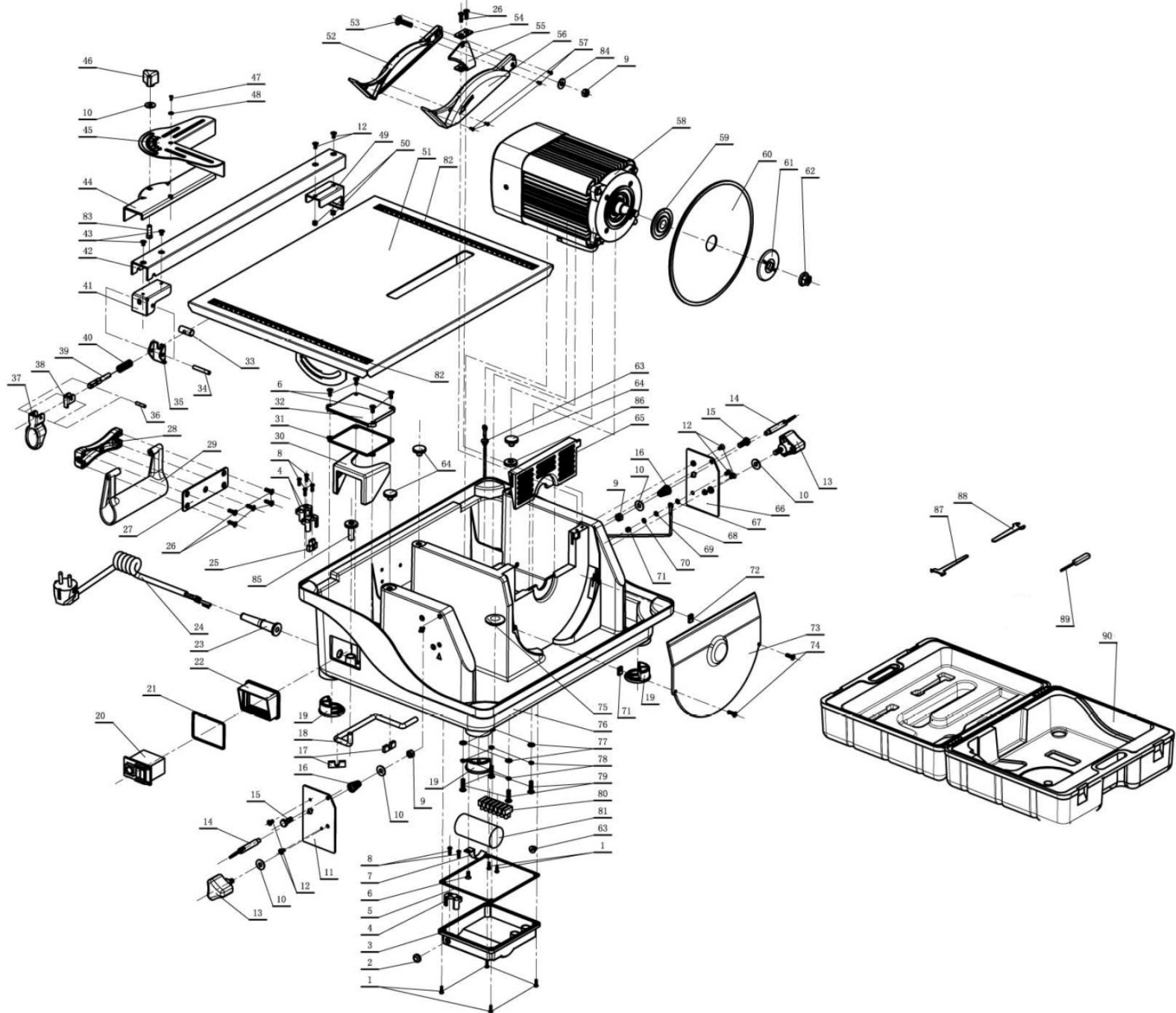
Common Replacement Parts

Description	Part Number
Tile Saw Blade See Distributor or Call Norton Clipper For Assistance In Selecting The Correct Norton Blade For Your Application	-NA-
COLLAR BLADE TIGHT	243056
COLLAR BLADE LOOSE	243058
NUT M12 FLANGE (BLADE SHAFT NUT)	243059
WRENCH SPANNER CTC701	243078
WRENCH 19MM OPEN END	243079
SCREW DRIVER PHILLIPS	243080
CARRYING CASE CTC701	243081

NOTE: All Parts Are Sold As Individual (each) Unless Noted Otherwise

Use Only Norton Diamond Blades. Contact your local Norton Clipper Distributor or Norton Clipper at 1-800-554-8003 for the best blade for the application.

8.1 CTC701 Service Parts



8.1 CTC701 Service Parts

POS	Part#	UPC#	Description	QTY REQ	Type(*)
1	243000		SCR 2.9 X 13 PHILLIPS HEAD	6	S
2	243001		GASKET FOR POWER CABLE	1	W
3	243002		COVER FOR CAPACITOR BOX	1	S
4	243003		CABLE CLAMP	3	S
5	243004		GASKET CAPACITOR BOX	1	W
6	243005		SCR 4 X 9	5	S
7	243006		SECURING STRAP FOR CAPACITOR	1	W
8	243007		SCR 3.5 X 12	6	S
9	235136	70184600850	NUT M6 DIN985 LOCK	3	S
10	300279	70184600756	WASHER LOCK M6 DIN127B	5	S
11	243008		BRACKET FRONT SUPPORTING	1	S
12	243009		SCR M4 X 8 0.7 DIN933	7	S
13	243010	00310361101	KNOB	2	S
14	243011		AXLE SHAFT	2	S
15	243012		SCR M6 X 16 1.0 DIN933	2	S
16	243013		SPRING	2	W
17	243014		SECURING STRAP	2	S
18	243015		CABLE INNER	1	W
19	243016	00310361102	FOOT RUBBER	4	W
20	243017		SWITCH POWER PUSH BUTTON CTC701	1	W
21	243018	00310301207	GASKET SWITCH CTC701	1	W
22	243019		BRACKET SWITCH CTC701	1	S
23	243020	00310361104	CABLE GUIDE	1	W
24	243021		POWER CABLE CTC701	1	W
25	243022		SECURING STRAP POWER CABLE CTC701	6	S
26	243023		SCR M4 X 13	7	S
27	243024		PLATE HANDLE SUPPORT CTC701	1	S
28	243025		BRACKET HANDLE CTC701	1	S
29	243026		HANDLE CTC701	1	S
30	243027		BRACKET SWITCH SECURING CTC701	1	S
31	243028		GASKET SWITCH BOX CTC701	1	W
32	243029		COVER SWITCH BOX CTC701	1	S
33	243030		NUT FIXING	1	S
34	243031		PIN M5 X 32 ROLL	1	S
35	243032		SECURING PLATE GUIDE-A-CUT CTC701	1	S
36	243033		PIN M4 X 18 ROLL	1	S
37	243034		LEVER GUIDE-A-CUT CTC701	1	S
38	243035		HINGE GUIDE-A-CUT CTC701	1	S
39	243036		SHAFT GUIDE-A-CUT CTC701	6	S
40	243037		SPRING GUIDE-A-CUT CTC701	1	W
41	243038		SLIDE GUIDE-A-CUT CTC701	1	S
42	243039		ARM GUIDE-A-CUT CTC701	1	S
43	243040		SCR M4 X 6 0.7 DIN933	2	S
44	243041		SLIDING SUPPORT GUIDE-A-CUT CTC701	1	W
45	243042	70184641853	ANGLE GUIDE GUIDE-A-CUT CTC701	1	W
46	243043		KNOB FOR GUIDE-A-CUT CTC701	1	S
47	243044		SCR M2.5 X 6	1	S
48	243045		WASHER M3 FLAT	1	S

POS	Part#	UPC#	Description	QTY REQ	Type(*)
49	243046		SLIDE W/SLOTS GUIDE-A-CUT CTC701	1	S
50	243047		NUT M4 DIN985 LOCK	1	S
51	243048	00310340199	CUTTING TABLE CTC701	1	S
52	243049		BLADE GUARD LEFT SIDE CTC701	1	S
53	243050		SCR M6 x 25 1.0 CARRIAGE	1	S
54	243051		BRACKET BLADE GUARD SUPPORT CTC701	1	S
55	243052	00310340200	SUPPORT BLADE GUARD CTC701	1	S
56	243053		BLADE GUARD RIGHT SIDE CTC701	1	S
57	243054		SCR 2.6 X 10	4	S
58	243055		MOT 1.07 HP (800W) 115v/60/1 CTC701	1	S
59	243056		COLLAR BLADE TIGHT	1	S
60	-NA-	Call for assistance	BLADE	1	W
61	243057		COLLAR BLADE LOOSE	1	S
62	243058		NUT M12 FLANGE	1	S
63	243059		GASKET POWER CABLE INPUT	2	S
64	243060		RUBBER STOP	3	W
65	243061	00310361134	PLATE MOTOR COVER CTC701	1	S
66	243062		BRACKET BACK SUPPORT CTC701	1	S
67	243063		WASHER M4 LOCK	1	S
68	243064		GROUND STRAP CTC701	1	W
69	235104	70184600873	WASHER M4 DIN125 FLAT	1	S
70	243065		WASHER M4 FLAT	1	S
71	243066		WASHER M4 LOCK	1	S
72	243067		NUT M4 DIN985 LOCK	2	S
73	243068	00310340216	PLATE BLADE COVER CTC701	1	S
74	235103A	70184600881	SCR M5 X 12 0.8 DIN933	2	S
75	243069	70184641855	DRAIN PLUG CTC701	1	W
76	243070	70184641854	WATER PAN CTC701	1	S
77	235065	70184600790	WASHER M5 DIN125 FLAT	4	S
78	502088	70184631179	WASHER M5 LOCK DIN127B	1	S
79	243071		SCR M5 X 18 0.8 DIN7985 PHILLIPS HEAD	4	S
80	243072		TERMINAL BLOCK CTC701	1	W
81	243073		CAPACITOR CTC701	1	W
82	243074		SCALE CUTTING TABLE CTC701	2	S
83	224237	70184665412	SCR M6 X 20 1.0 DIN933	1	S
84	27539	70184600585	WASHER M6 DIN 125 FLAT	1	S
85	243075		GASKET POWER CABLE OUTPUT CTC701	1	W
86	243076		RUBBER WASHER		S
87	243077		WRENCH SPANNER CTC701	1	S
88	243078		WRENCH 19MM OPEN END	1	S
89	243079		SCREW DRIVER PHILLIPS	1	S
90	243080	00310361166	CARRYING CASE CTC701	1	S

(*): S = Spare part, W = Wear part

Wear parts are worn out through normal use of the machine. The wear period depends a lot on the intensity of use of the machine. Wear parts must be serviced, used and eventually changed following the indications of the manufacturer. Any wear due to normal use of the machine will not be considered as a case of warranty. Genuine Norton Clipper replacement parts should always be used. All items are sold as each unless otherwise noted.

NOTES:

Saint-Gobain Abrasives
2770 West Washington
Stephenville, TX 76401
Phone: 800-554-8003
Fax: 800-443-1092



WARNING

Some dust created by power sanding, sawing, grinding, drilling, and other construction activities contains chemicals known to cause cancer, birth defects or other reproductive harm. Some examples of these chemicals are:

- Lead from lead-based paints,
- Crystalline silica from bricks and cement and other masonry products, and
- Arsenic and chromium from chemically-treated lumber.

Your risk from these exposures varies, depending on how often you do this type of work. To reduce your exposure to these chemicals: work in a well ventilated area, and work with approved safety equipment, such as those dust masks that are specially designed to filter out microscopic particles.